



# PLAY GLOUCESTERSHIRE'S PLAY RANGERS

Easter Holiday Play Days

**The Recreation Ground,  
Ruspidge  
GL14 3AE**



[///grapevine.runs.wool](https://grapevine.runs.wool)

**Tuesday 19th April 2022  
10am to 4pm**

**With thanks to Councillor Graham Morgan who funded  
this through his Growing Communities Fund**



Scan our QR code for more  
information via our website



Our Play Ranger activities take place outdoors in all weathers and are open access. This means there is no registration, children are free to come & go as they please.

Under 7's are welcome and should be accompanied by a parent or carer.

These play session may be affected by Covid-19 infections and restrictions. Check for up to date details on our social media.



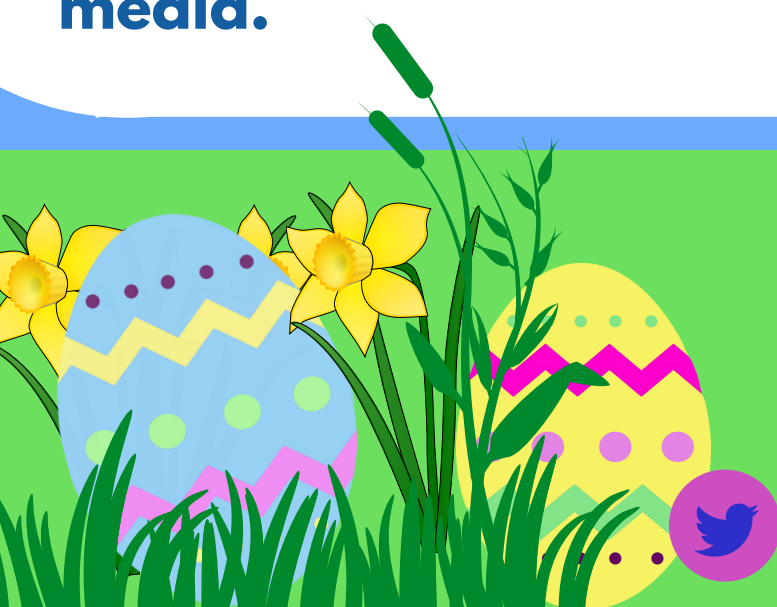
**Play Gloucestershire**

Transforming lives through the power of play  
[www.playgloucestershire.org.uk](http://www.playgloucestershire.org.uk)

@play\_glos



@playgloucestershire







# *Things you need to know about Play Gloucestershire*

Play Gloucestershire - a registered charity - is the leading provider of free, outdoor, active play in the county. Our Play Rangers activities target 7 - 14 year olds. Under 7's are welcome and should be accompanied by a parent or carer. We love families to join us at all our sessions.

Our Play Ranger activities are open access. This means there is no registration – children can leave the site at any time. Our Play Rangers will not stop them and may not know that they have left.

We encourage children to take responsibilities for their own actions. We think this is good for them. They will be encouraged to resolve disagreements amongst themselves. We will intervene if absolutely necessary.

Play Gloucestershire believe that children need and want to take risks when they play. Our Play Rangers aim to respond to these needs by offering children stimulating, challenging environments for exploring and developing their abilities. In doing this, we aim to manage the level of risk so that children are not exposed to unacceptable risks. Our experience tells us that whilst children play outdoors they are likely to have accidents. If this causes concern please come along and speak to us about it.

All our activities are outdoors and include den building, fires, arts and crafts, sports and a range of playful games. We encourage children to play freely and choose what they do. They do not have to do anything if they don't want to. Children will get wet, hot, cold, smelly and dirty and need to wear appropriate clothing and footwear. Better to wear old play clothes than ruin your best!

Our Play Rangers will provide drinking water at all sessions. We promote healthy eating and sometimes will provide free fruit.

We believe all children have the right to play. Please talk to us if your child needs additional support to enjoy Play Rangers. We welcome disabled children & their families.

**For further information:**

**Visit us at [www.playgloucestershire.org.uk](http://www.playgloucestershire.org.uk)**

**Email [info@playgloucestershire.org.uk](mailto:info@playgloucestershire.org.uk)**

**Phone 01452 505548**

**Play Gloucestershire is a registered charity (1126562)**