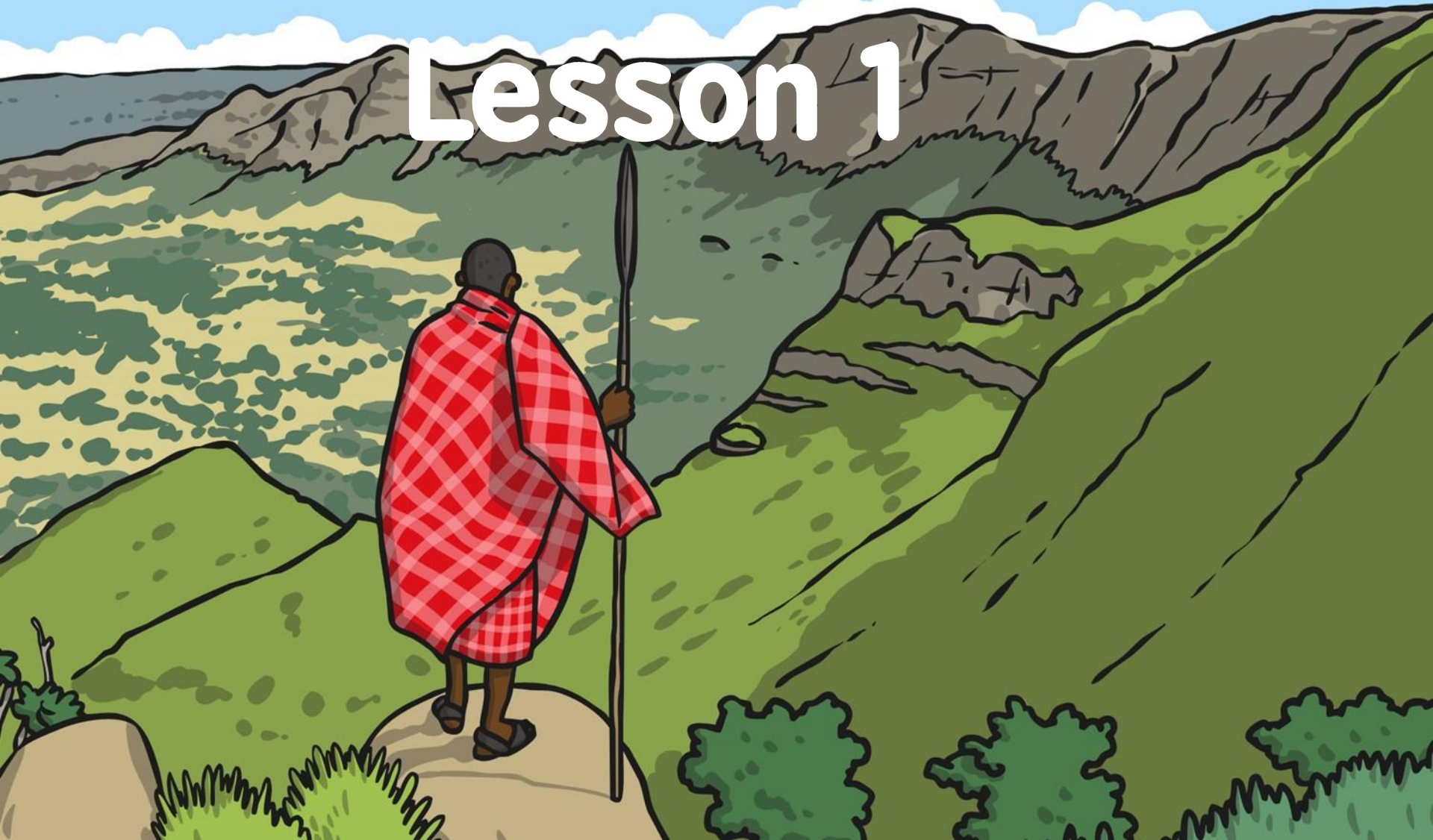


# Where is Kenya?

## Lesson 1



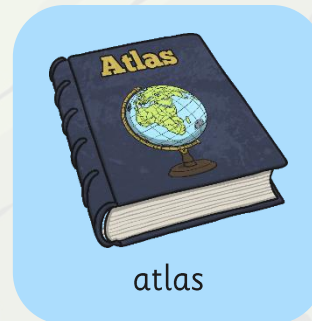
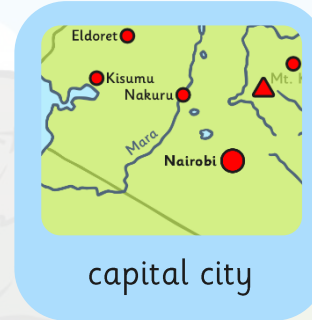
# Aim

- I can understand where Kenya is in the world.
- I can locate Kenya on a world map.

# Success Criteria

- I can describe where Kenya is located in the world using key words.
- I can tell my partner 3 things I know about the country.
- I can use an atlas independently to locate Kenya on a world map.

# Key Words



# What Do I Know Already? Quick Quiz!



1

Which continent is Kenya in?

2

Can you write any 2 things you know about Africa?

3

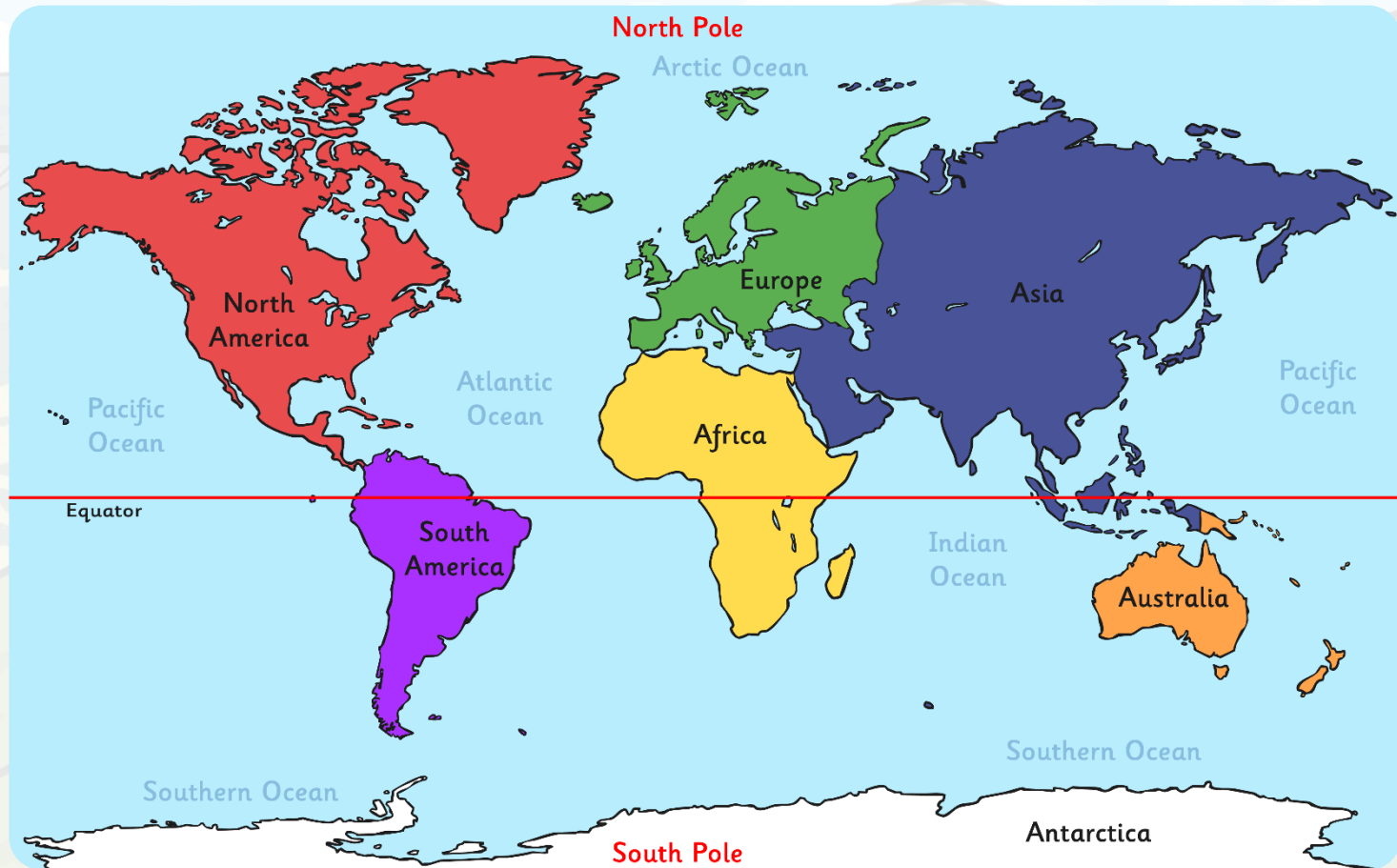
What do you think the climate/weather is like in Kenya?

4

What animals do you think live in Kenya?



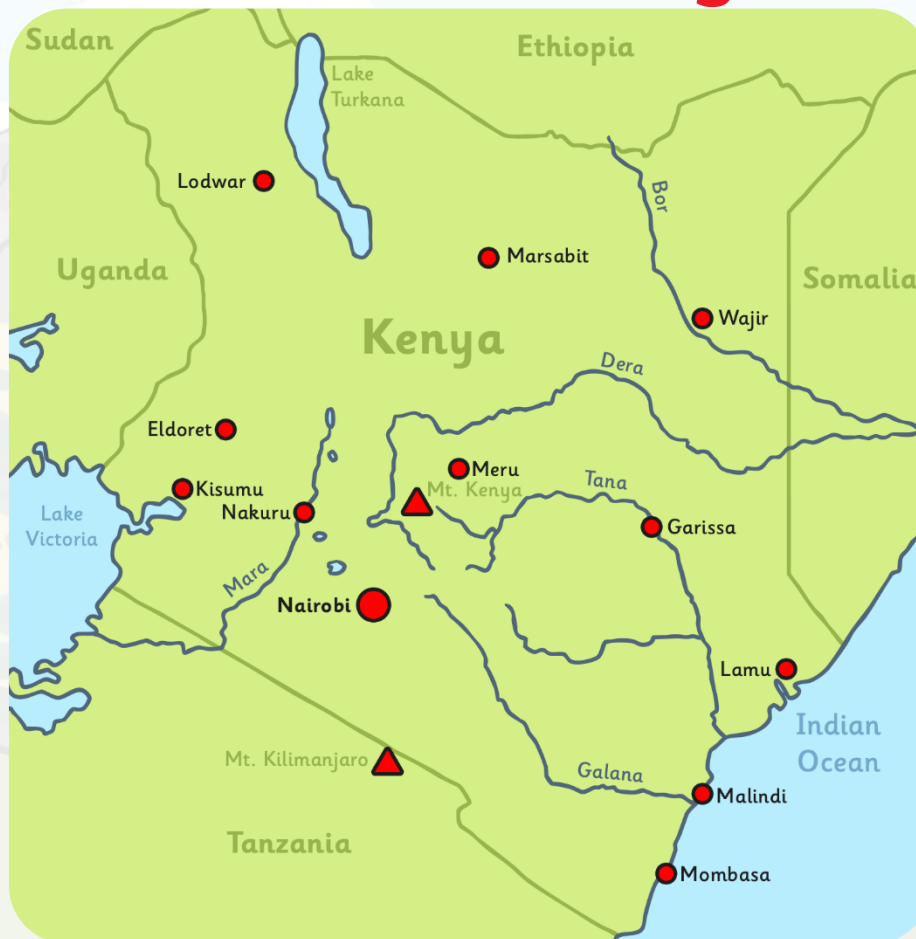
# Where Is Kenya?



# Where Is Kenya?



# Where Is Kenya?



Copy and paste this link to take a closer look! <https://mapmaker.nationalgeographic.org/>



# Where Is Kenya?



Kenya is located in East Africa. It is known as the Republic of Kenya.

Kenya's population is around 44 million! Kenya is one small country compared to the vast size of the continent, Africa.





# Where Is Kenya?



This is Kenya's national flag:



Nairobi is the capital city and Mombasa is the largest city in Kenya.



# Where Is Kenya?



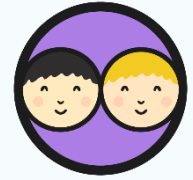
The Tana river is the longest river in Kenya.

Mount Kenya is the highest mountain in Kenya,  
and the country itself was named after the mountain!





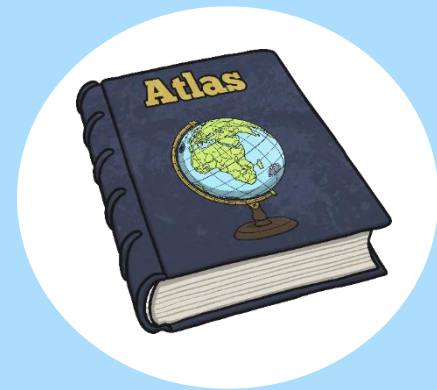
# Kenya Atlas Challenge



Work with you home learning helper to complete this quick activity.  
Using the link to the online atlas, or on a previous slide find a map of Africa.

See how quickly you can answer these questions:

- Can you find the capital city?
- Can you find Mombasa, Mount Kenya or the Tana river?
- Can you find a city in the north of Kenya?
- Which cities are on the coast?
- Name an ocean near to Kenya.
- Name 2 countries which border Kenya

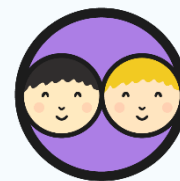


Challenge:

- Which countries border Kenya?
- How many countries can you find and name in Africa?

How many questions did you answer?

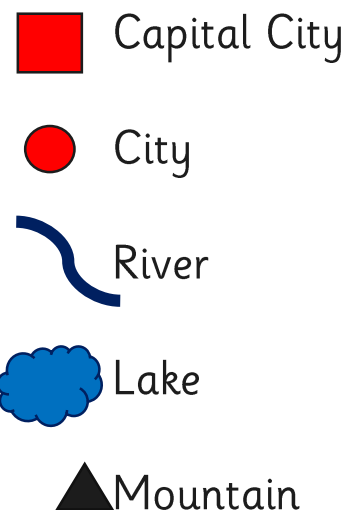
# Kenya Atlas Challenge



Now, see if you can plot these landmarks on a map!  
Don't forget to add a 'key' for the symbols.

- Can you find the capital city?
- Can you find Mombasa, Mount Kenya or the Tana river?
- Can you find a city in the north of Kenya?
- Which cities are on the coast?
- Name an ocean near to Kenya.
- Name 2 countries which border Kenya

## Symbols Key



Challenge:

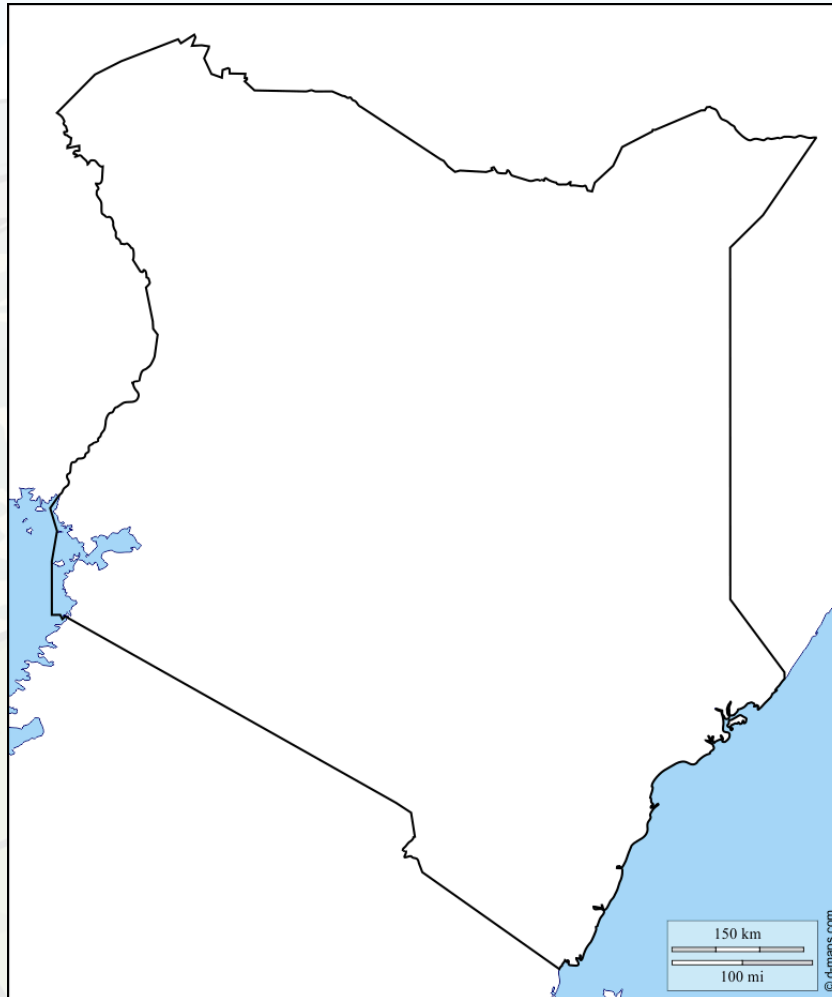
- Which countries border Kenya?
- How many countries can you find and name in Africa?

How many questions did you answer?








# Kenya Atlas Challenge

Plot your landmarks on the map!



## Symbols Key

-  Capital City
-  City
-  River
-  Lake
-  Mountain

# Aim

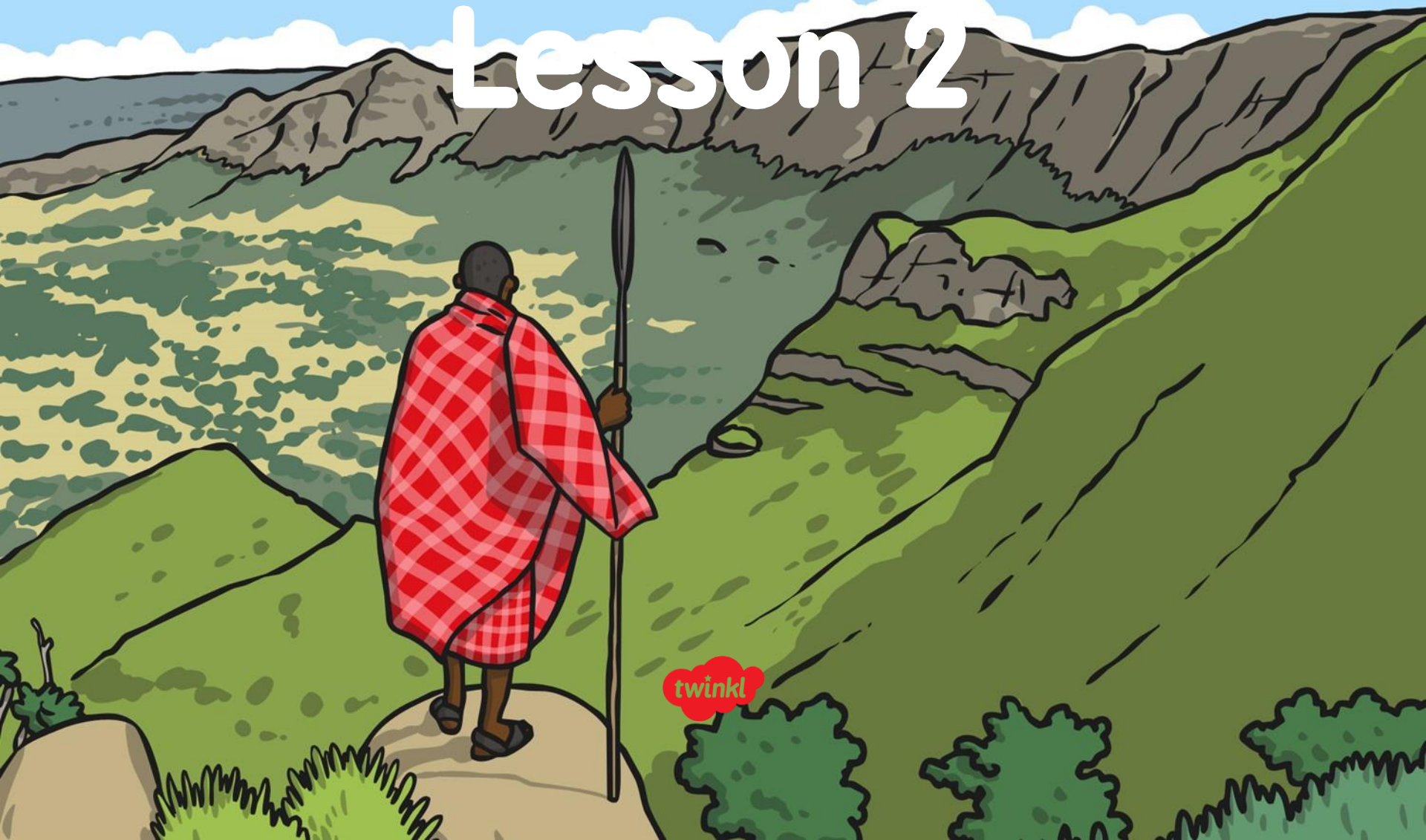
- I can understand where Kenya is in the world.
- I can locate Kenya on a world map.

# Success Criteria

- I can describe where Kenya is located in the world using key words.
- I can tell my partner 3 things I know about the country.
- I can use an atlas independently to locate Kenya on a world map.

# Let's Explore

## Lesson 2





# Aim

- I can draw a simple map.
- I can understand what life is like for people living in Kenya.

## Success Criteria

- I can draw a freehand map of Kenya.
- I can label my map with main cities, oceans, rivers and mountains.
- I can explain 3 things I have found out about Kenyan life.
- I can research my own facts to show what I know about Kenya.



# Key Words



map



key



label



Africa  
(continent)



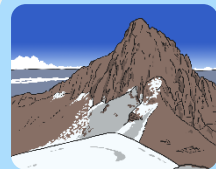
Kenya



Nairobi  
(capital city)



River Tana



Mount  
Kenya



tourists



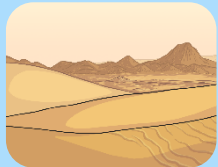
population



equator



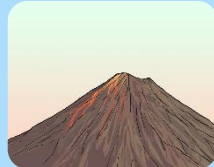
drought



deserts



culture



volcano



Swahili

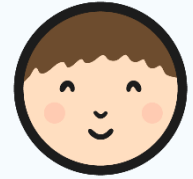


National  
Park



savannah

# Map from Memory

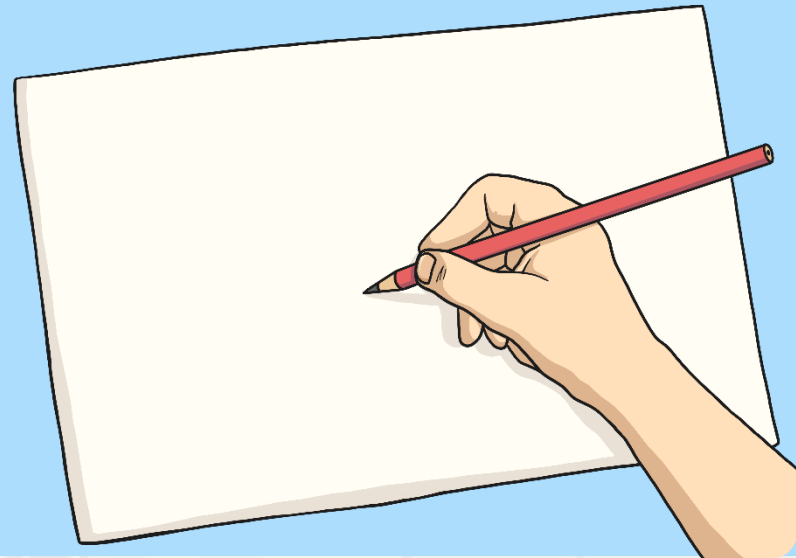


Think about the map of Kenya.

Close your eyes and picture what the shape of the country looks like.

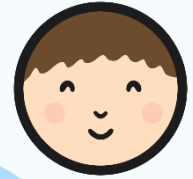
'Air draw' the map with your finger.

Draw a freehand map of Kenya from memory.



Challenge:

- Can you label any cities, rivers, oceans or countries which border Kenya using the word bank to help you?
- Change maps with your partner. How are they different? How are they similar?



Mombasa

Indian Ocean

Nairobi

Kisumu

Lake Victoria

Great Rift Valley

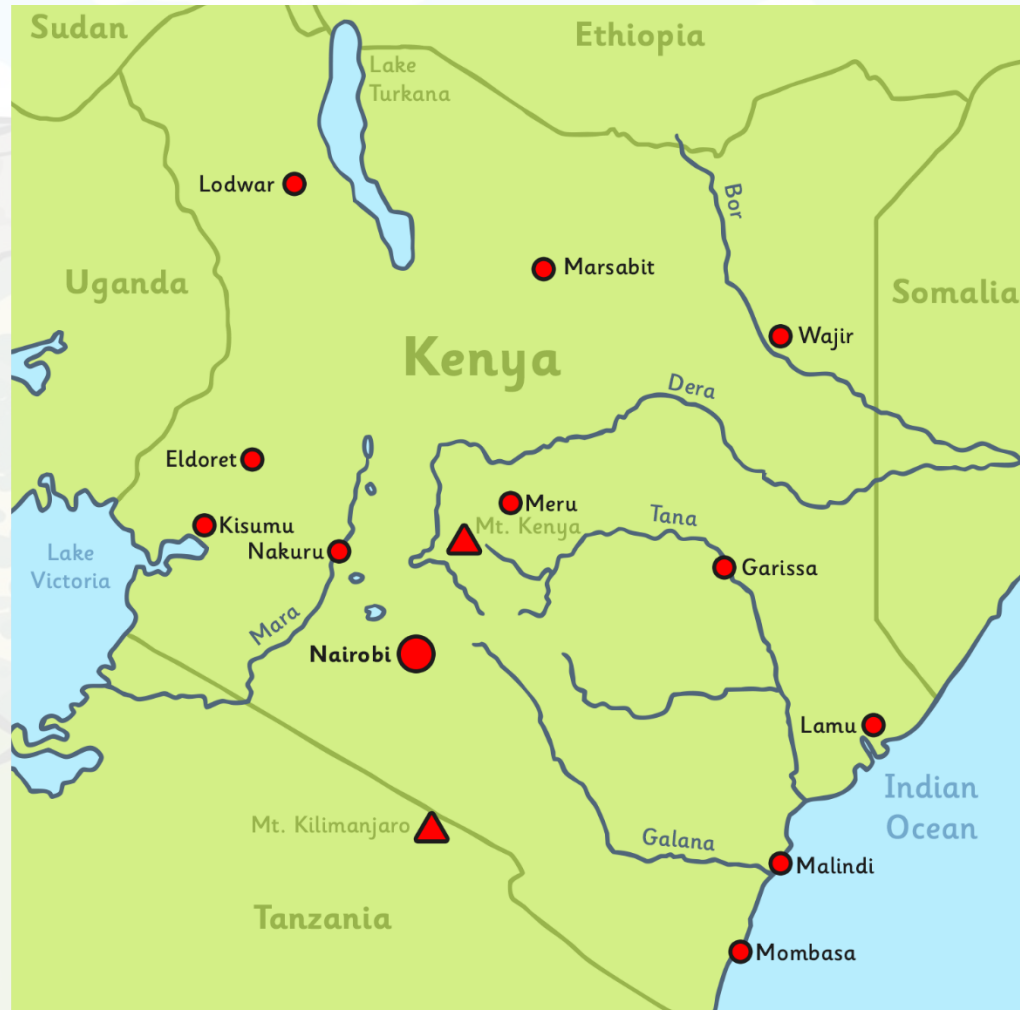
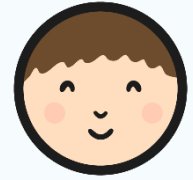
Lake Turkana

Mount Kenya



**Map from Memory  
Word Bank**

# Map from Memory





# Exploring Kenya

Watch this short video about Kenya.



Copy and paste this link: <https://www.bbc.co.uk/bitesize/clips/zrsgkqt>

What can we find out about Kenya?

Write or draw 3 facts about Kenya on the sheet or on a piece of paper.

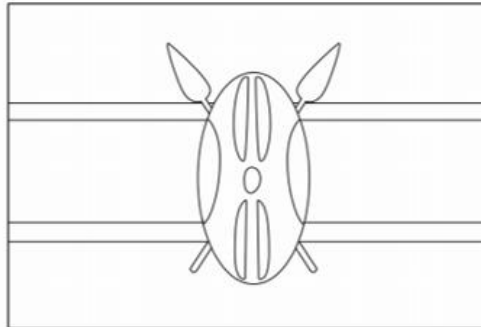
Date: .....

L.O. To develop my understanding of the country Kenya.

After watching the video, can you write 3 facts that you have learnt?

1. ....  
.....
2. ....  
.....
3. ....  
.....

Can you colour in the Kenyan flag?



# Exploring Kenya



What did you find out about Kenya?

Write or draw 3 facts about Kenya on the sheet or on a piece of paper.

Can you answer any of these questions?.

- What is the weather like in Kenya?
- Why is the weather like this?
- What do we know about the weather in the UK?
- What special foods are eaten in Kenya?
- What is school like in Kenya?
- How might going to school in Kenya be different or similar to going to school in the UK?



# Exploring Kenya



The capital city is Nairobi. Mombasa is the largest city in Kenya.

Kenya's population is around 44 million!



Photo courtesy of ninara and Victor O' (@flickr.com) - granted under creative commons licence - attribution



# Exploring Kenya

## Weather and Climate



Kenya lies on the Equator, which means the climate is hot, sunny and dry for most of the year.



Mount Kenya is high enough to have snow all year round. It is very cold in the mountains. In the highlands it is cool.



In the north it is hot and dry with arid deserts. In the west it is hot and humid and the rainfall can be highest here. If there is no rainfall for a long time, droughts can occur.



# Exploring Kenya

## Culture



More than 60 languages are spoken in Kenya! The official languages of Kenya are Swahili and English.



Music and storytelling are very important in Kenya.



There are many different types of food in Kenya such as cassava, ugali and Kenyan stew. Maize and other cereals are the staple grains.





# Exploring Kenya

## Rivers and Mountains



The Tana river is the longest river in Kenya.



Mount Kenya is the highest mountain in Kenya, and the country itself was named after the mountain!





# Exploring Kenya

## The Great Rift Valley



The Great Rift Valley is an enormous valley of mountains which runs from the north to south of Kenya. The valley has a chain of volcanoes which are still 'active' (alive).

Lake Victoria, the second largest lake in the world, is part of the Great Rift Valley.



# Exploring Kenya

## Going to School



Not all Kenyan children go to school. Many children are too busy helping their families by working on the land, farming, cooking or fetching water.

Some children may have over an hour's walk to school.  
Some children may be different ages but in the same year group.  
Some schools have very few resources.





# Exploring Kenya

## Animals



Kenya has many different species of animals. Millions of people visit Kenya each year to see the huge savannah and the animals that inhabit it such as elephants, lions, cheetahs, meerkats and zebras.

The 'big five' animals in Africa are the African lion, white/black rhinoceros, African leopard, Cape buffalo, and the African elephant.





# Exploring Kenya

## National Parks

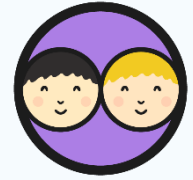


Kenya has over 50 nature reserves and national parks to protect these animals. The Maasai Mara reserve is the most popular.



Photo courtesy of ninara (@flickr.com) - granted under creative commons licence - attribution

# Google It!



**Use Google Maps to explore Kenya in more detail.**



What places can you find?

What do you think of them?

What oceans, seas, mountains, rivers or landmarks can you find?

Can you use Google Street View?

What is happening in the photographs?

